



**KP-L2137B**  
 Kupole-Black  
 Height extends from  
 210cm to 370cm  
 Upper tube DIA.4cm  
 Lower tube DIA.4.5cm

**KP-M1527B**  
 Kupole-Black  
 Height extends from  
 150cm to 270cm

**KP-S1017B**  
 Kupole-Black  
 Height extends from  
 100cm to 170cm



**KP-L2137BC**  
 Kupole with curvy  
 handle-Black  
 Height extends from  
 210cm to 370cm  
 Upper tube DIA.4cm  
 Lower tube DIA.4.5cm



**KP-L2137PC**  
 Kupole with curvy  
 handle-Polish  
 Height extends from  
 210cm to 370cm  
 Upper tube DIA.4cm  
 Lower tube DIA.4.5cm



**KP-L2137PD**  
 Kupole-Polish  
 Height extends from  
 210cm to 370cm  
 Upper tube DIA.4cm  
 Lower tube DIA.4.5cm

**KP-M1527PD**  
 Kupole-Polish  
 Height extends from  
 150cm to 270cm

**KP-S1017PD**  
 Kupole-Polish  
 Height extends from  
 100cm to 170cm



### **KPG-L2137P**

Gyro-pole, Polish  
Height extends from  
210cm to 370cm  
Upper tube DIA.4cm  
Lower tube DIA.4.5cm



### **KP-X15P**

Kupole Extension  
Polish  
Height 150cm  
DIA.4cm  
Inserts into top of Kupole

### **KP-X20P**

Kupole Extension  
Polish  
Height 200cm



### **KP-X15B**

Kupole Extension  
Black  
Height 150cm  
DIA.4cm  
Inserts into top of Kupole

### **KP-X20B**

Kupole Extension  
Black  
Height 200cm



### KCP-350P / B

#### Mini Ali Clamp

Mounting on KCP-700 with  
KS-017 or KS-020  
Available in silver and black



### KCP-360P / B

#### Ali Clamp

Mounting on KCP-700 with  
KS-017 or KS-020  
Available in silver and black



### KCP-700P / B

#### Convi Clamp

The jaw grip from 13mm to 55mm  
Attach accessories to Kupole,  
Span or Tube  
Available in silver and black



### KD-0730P / B

#### Mini Ali Clamp with Stud

KCP-350+KS-017  
Mounting on KCP-700  
Available in silver and black



### KD-0731P / B

#### Ali Clamp with Stud

KCP-360+KS-017  
Mounting on KCP-700  
Available in silver and black



### KD-0732P / B

#### Mini Ali Clamp with Stud

KCP-350+KS-020  
Mounting on KCP-700  
Available in silver and black



### KD-0733P / B

#### Ali Clamp with Stud

KCP-360+KS-020  
Mounting on KCP-700  
Available in silver and black



### KD-0930P

#### Curved Frame

53cm W x 72cm H  
Accepts 2 panels each  
59cm W x 72cm H  
Mounts on Kupole  
includes 2 KD-900



### KD-600P

#### Vivi-Ring with M10

Female Thread  
Clamp tubes from DIA. 40mm to 45mm  
Rotating clamp with 4 M10 holes



### **KD-601P**

Vivi-Ring with M6  
Female Thread

Clamp tubes from DIA. 40mm to 45mm  
Rotating clamp with 8 M6 holes



### **KD-602P**

Vivi-Ring with Hanger Rod

Clamp tubes from DIA. 40mm to 45mm  
Rotating clamp with 4 screwed rods  
Rod size: Dia.1.9cm  
Length: 40.8cm



### **KD-603P**

Vivi-Ring with Slim Rod

Clamp tubes from DIA. 40mm to 45mm  
Rotating clamp with 8 screwed rods  
Rod size: Dia.0.8cm  
Length: 25cm



### **KD-604P**

Bicycle Helmet Holder

Vivi-ring with 4 rods and 4 clear acrylic  
Rod size: DIA. 1.9cm, 10cm L  
Acrylic size: 25cm L x 8cm W x 12cm H



### **KD-650W**

Kupole Round Table

DIA.60cm  
Maximum weight load 20kg  
Available in white board with  
polished hardware



### **KD-710P / B**

Panel Holder

Attach panels or shelves to KCP-700  
Accepts material up to 0.8cm thick  
Available in polish and black



### **KD-720P / B**

Panel Holder with Set Screw

Attach panels or shelves to KCP-700  
Accepts material up to 0.8cm thick  
Available in polish and black



### **KD-730P / B**

Socket

Mounting on KCP-700 as  
Double Convi Clamp  
Available in silver and black



### **KD-735P**

Mini Flex Arm with Clip

23cm L  
Mounting on KCP-700  
Available in Chrome

**KD-737P**

Swivel Arm

58cm L

Attaches display head to KCP-700

**KD-738W / B**

Tiny Clamp with Swivel Arm

Fit DIA.12mm - DIA. 36mm tube &amp;

square plate thickness 10mm - 45mm

**KD-740P**

Display Shelf

38cm square, 37cm adjustable extension

Mounting on KCP-700

Maximum load 4.5 kg

**KD-740P-A**

Holding Arm

37cm adjustable extension

Mounting on KCP-700

**KD-739P**

C Stand

For model's head

Height extends from 102.5cm to 142.5cm

Upper tube DIA.3cm

Lower tube DIA.3.5cm

**KD-741P**

Shelf with Bent Edges

76cm W x 38cm D

Maximum load 30 kg

**KD-742P**

Book Shelf

25cm W x 20cm D x 25cm H

Mounting on KCP-700

Maximum load 9 kg

**KD-743P**

Catalogue Shelf

25cm W x 8.6cm D x 25cm H

Mounting on KCP-700

Maximum load 9 kg



### **KD-747P**

#### **Round Shelf**

DIA. 33cm  
29cm adjustable extension  
Mounting on KCP-700  
Maximum load 4.5 kg



### **KD-750S**

#### **Sign Frame Sidemount**

55cm W x 70cm H graphic size  
Accepts material up to 0.6cm thick  
Requires 2 KCP-700



### **KD-751P**

#### **Sign Frame Tripod/Ceiling**

55cm W x 70cm H graphic size  
Accepts material up to 0.6cm thick  
Mounting on KCP-700,  
KD-CF16P or KD-F95P



### **KD-752P**

#### **Sign Frame Tripod/Ceiling**

27cm W x 35cm H graphic size  
Accepts material up to 0.6cm thick  
Mounting on KCP-700,  
KD-CF16P or KD-F95P



### **KD-753P**

#### **Sign Frame with Base**

39cm W x 55cm H graphic size  
Accepts material up to 0.6cm thick  
Includes square base 25cm



### **KD-760SP / SB**

#### **Banner Rod with Stud**

61cm L, DIA. 2.5cm  
Mounting on KCP-700  
Available in polish and black



### **KD-760TP / TB**

#### **Banner Rod with Thread**

61cm L, DIA. 2.5cm  
Mounting on KCP-700  
Available in polish and black



### **KD-770P**

#### **Display Box**

30.5cm square acrylic  
30.7cm shelf with bent edges  
29cm adjustable extension  
Mounting on KCP-700  
Maximum load 4.5 kg



### **KD-770P-A**

#### **Holding Arm**

29cm adjustable extension  
Mounting on KCP-700

**KD-771P****Shelf with Bent Edges**

30.7cm square  
29cm adjustable extension  
Mounting on KCP-700  
Maximum load 4.5 kg

**KD-781P / B****Faceout with Hanger Stop**

41cm L, DIA. 3.5cm  
Mounting on KCP-700

**KD-790P / B****L Bracket Shelf Holder**

Set of 2  
17cm W x 4cm D x 4cm H  
Requires 2 KCP-700  
Available in polish and black

**KD-795P / B****Compact U Hook**

1.6cm depth  
Requires KCP-700  
Available in silver and black

**KD-800P****Telescopic Signholder**

Adjustable from 51cm to 152.5cm  
Includes 4 KCP-350P  
Mounting on KCP-700, KD-CF16P  
or KD-CM16P

**KD-812P / B****U Hook**

4.4cm depth  
Mounting on KCP-700, KD-900  
KD-C05 or KD-PR100  
Available in polish and black

**KD-813P / B****Compact U Hook**

1.6cm depth  
Mounting on KCP-700, KD-900,  
KD-C05 or KD-PR100  
Available in silver and black

**KD-815P****Vase Holder**

DIA. 7.4cm  
Mounting on KCP-700, KD-900,  
KD-C05 or KD-PR100

**KD-816P / B****Square Clip**

5.3cm W x 9cm H  
Mounting on KCP-700, KD-900,  
KD-C05 or KD-PR100  
Available in silver and black



**KD-840LB**  
Panel with Holes  
108cm L x 15cm W x 1.86cm D  
Mounting on 35mm tube

**KD-840MB**  
82.5cm L x 15cm W x 1.86cm D

**KD-840SB**  
44cm L x 15cm W x 1.86cm D



**KD-841LB**  
Panel  
108cm L x 15cm W x 1.86cm D  
Mounting on 35mm tube

**KD-841MB**  
82.5cm L x 15cm W x 1.86cm D

**KD-841SB**  
44cm L x 15cm W x 1.86cm D



**KD-842LB**  
Extension Panel with Holes  
108cm L x 22cm W x 1.86cm D  
Mounting on 35mm tube

**KD-842MB**  
82.5cm L x 22cm W x 1.86cm D

**KD-842SB**  
44cm L x 22cm W x 1.86cm D



**KD-843LB**  
Extension Panel  
108cm L x 22cm W x 1.86cm D  
Mounting on 35mm tube

**KD-843MB**  
82.5cm L x 22cm W x 1.86cm D

**KD-843SB**  
44cm L x 22cm W x 1.86cm D



**KD-850S**  
Sign Frame Sidemount  
55cm W x 70cm H graphic size  
Accepts material up to 0.6cm thick  
Requires 2 KCP-700 or 2 KD-900



**KD-854S**  
Round Frame with Base  
DIA. 50cm  
Accepts material up to 0.6 thick  
Includes square base 25cm



**KD-855S**  
Round Frame  
DIA. 50cm  
Accepts material up to 0.6cm thick  
Mounting on KCP-700, KD-900,  
KD-C05 or KD-PR100



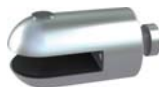
**KD-856S**  
Round Frame  
DIA. 60cm  
Accepts material up to 0.6cm thick  
Mounting on KCP-700, KD-900,  
KD-C05 or KD-PR100



### KD-900P / B

#### Donut

Clamp tubes from DIA.40mm to 45mm  
Attaches up to 3 accessories  
to tube  
Available in polish and black



### KD-910P / B

#### Panel Holder

Attach panels or shelves to KD-900,  
KD-C05 or KD-PR100  
Accepts material up to 0.8cm thick  
Available in polish and black



### KD-915P / B

#### Tidy Panel Holder

Attach panels or shelves to KD-900,  
KD-C05 or KD-PR100  
Accepts material up to 1.2cm thick  
Available in polish and black



### KD-920P / B

#### Rotating Panel Holder

Attach panels or shelves to KD-900,  
KD-C05 or KD-PR100  
Accepts material up to 0.8cm thick  
Available in polish and black



### KD-933P

#### Bicycle Workbench

30cm L x 18cm W x 1.3cm D  
Mounting on KD-900, KD-C05  
or KD-PR100



### KD-934P

#### Vertical Bicycle Fixture

41cm L span with U hook  
Mounting on KD-900, KD-C05  
or KD-PR100



### KD-935P

#### Bicycle Fixture

42cm W x 0.35cm D x 3.5cm H  
Mounting on KD-900, KD-C05  
or KD-PR100  
Maximum load 15 kg



### KD-937P

#### Swivel Arm

58cm L For model's head  
Attaches display head to KD-900,  
KD-C05 or KD-PR100



### KD-940P

#### Display Shelf

38cm square  
37cm adjustable extension  
Mounting on KD-900, KD-C05  
or KD-PR100  
Maximum load 4.5 kg



### **KD-940P-A**

#### **Holding Arm**

37cm adjustable extension  
Mounting on KD-900, KD-C05  
or KD-PR100



### **KD-942P**

#### **Book Shelf**

25cm W x 20cm D x 25cm H  
Mounting on KD-900, KD-C05  
or KD-PR100  
Maximum load 9 kg



### **KD-943P**

#### **Catalogue Shelf**

25cm W x 8.6cm D x 25cm H  
Mounting on KD-900, KD-C05  
or KD-PR100  
Maximum load 9 kg



### **KD-947P**

#### **Round Shelf**

DIA. 33cm  
29cm adjustable extension  
Mounting on KD-900, KD-C05 or KD-PR100  
Maximum load 4.5 kg



### **KD-961P**

#### **Rectangular Crossbar Faceout**

41cm L  
For use with KD-960  
Maximum load 3 kg



### **KD-960LP**

#### **Rectangular Crossbar**

106cm L  
Requires 2 KD-900, 2 KD-C05  
or 2 KD-PR100  
Maximum load 20 kg



### **KD-970P**

#### **Display Box**

30.5cm square acrylic  
30.7cm shelf with bent edges  
29cm adjustable extension  
Mounting on KD-900, KD-C05 or KD-PR100  
Maximum load 4.5 kg



### **KD-970P-A**

#### **Holding Arm**

29cm adjustable extension  
Mounting on KD-900, KD-C05  
or KD-PR100

### **KD-960MP**

80cm L  
Maximum load 25 kg

### **KD-960QP**

62cm L  
Maximum load 25 kg

### **KD-960SP**

41cm L  
Maximum load 30 kg



### **KD-771P**

#### **Shelf with Bent Edges**

30.7cm square  
29cm adjustable extension  
Mounting on KD-900, KD-C05  
or KD-PR100  
Maximum load 4.5 kg



### **KD-980WSP**

#### **Span Wall Mount**

DIA. 3.5cm  
20cm L  
Mounting on KD-900, KD-C05  
or KD-PR100 to wall



### **KD-980LP / LB**

#### **Span**

DIA. 3.5cm  
106cm L  
Requires 2 KD-900, KD-C05  
or KD-PR100  
Maximum load 20 kg  
Available in polish and black



### **KD-981P/B**

#### **Span with Hanger Stop**

DIA. 3.5cm  
41cm L  
Mounting on KD-900, KD-C05  
or KD-PR100



### **KD-982P**

#### **Wall Mount**

DIA. 3cm  
Attaches KD-980 to  
ceilings or wall

### **KD-980MP / MB**

80cm L  
Maximum load 25 kg

### **KD-980QP / QB**

62cm L  
Maximum load 25 kg

### **KD-980SP / SB**

41cm L  
Maximum load 30 kg



### **KD-983TP**

#### **Banner Rod with Screw**

61cm L  
DIA. 2.5cm  
Mounting on KD-900, KD-C05  
or KD-PR100  
Available in polish and black



### **KD-985P**

#### **Hangrod**

115cm W x 25.5cm D  
Requires 2 KD-900, KD-C05  
or KD-PR100  
Maximum load 20 kg



### **KD-990P/B**

#### **L Bracket Shelf Holder**

17cm W x 4cm D x 4cm H  
Mounting on KD-900, KD-C05  
or KD-PR100  
Available in polish and black



**KD-B126P**  
Kupole Tripod Base  
Footprint DIA. 126cm



**KD-C25P**  
Owlet Clip  
Accept cable 3C x 1.5mm or 0.75mm  
Clip tubes from 25mm-35mm



**KD-C40P**  
Owl Clip  
Accept cable 3C x 1.5mm or 0.75mm  
Clip tubes from 40mm-50mm



**KD-C50P**  
Kupole Suspended  
Ceiling Adapter  
Attaches Kupole to typical  
suspended type ceiling



**KD-CF16P**  
Ceiling Clip with  
Female Socket  
Attach accessories to typical  
suspended type ceiling



**KD-CM16P**  
Ceiling Clip with  
Male Adapter  
Attach accessories to typical  
suspended type ceiling



**KD-F50P**  
Kupole Finial  
Fits on top of Kupole when not  
tension mounted



**KD-F95P**  
Kupole Female Socket  
Mounts on top of Kupole when not  
tension mounted  
Insert accessories into socket on top



### KD-M01P

#### LCD Monitor Arm with Connector Plate

Fit VESA interface: 75mm x 75mm  
or 100mm x 100mm  
Mounts on Kupole  
Maximum load 8 kg



### KD-R48P

#### Kupole Disc Base

DIA. 48.3cm  
Base for Kupole



### KD-R48-B

#### Disc Base Adapter

Attaches Base to Kupole



### KD-T50P

#### Kupole Coupler

Attaches Kupole to fit tube with  
diameter between 4.8cm to 5.1cm



### KD-TM10

#### Screw

M10: 2.8cm L  
1/4-20 Thread: 0.5cm L  
For Span joint



### KS-012

#### U Hook

4.4cm depth  
Requires KCP-700



### KS-017

#### Adapter

Attach accessories to KCP-700



### KS-020

#### Adapter

Attach accessories to KCP-700